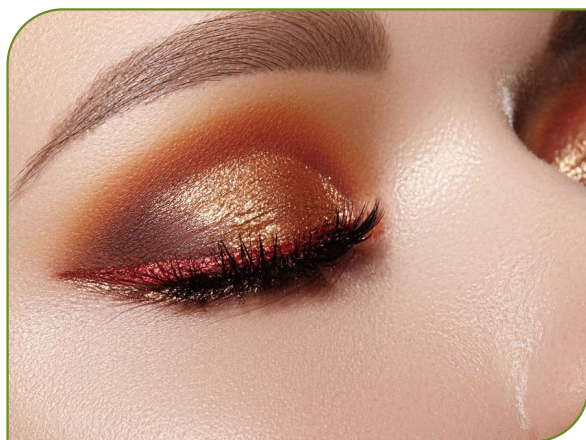


# GLIDE-ON LIQUID EYE SHADOW

with Floraesters® 60, L22®, StarDesign™ Power and Floraesters® 15



Phase	Trade Name	INCI	Supplier	%WT
A	Deionized Water	Aqua	---	61.26
	<b>Actigum™ CS 11 QD</b>	<b>Sclerotium Gum</b>	<b>Cargill</b>	<b>0.36</b>
	<b>Glycerin, USP</b>	<b>Glycerin</b>	<b>Cargill</b>	<b>2.40</b>
	Zemea® Propanediol	Propanediol	Dupont Tate & Lyle	1.60
B	<b>Floraesters® 60</b>	<b>Jojoba Esters</b>	<b>Cargill</b>	<b>3.20</b>
	<b>Floraesters® 15</b>	<b>Jojoba Esters</b>	<b>Cargill</b>	<b>1.20</b>
	<b>Florasun® 90</b>	<b>Helianthus Annuus (Sunflower) Seed Oil</b>	<b>Cargill</b>	<b>3.20</b>
	<b>L22®</b>	<b>Jojoba Oil/Macadamia Seed Oil Esters (and) Squalene (and) Phytosteryl Macadamiate (and) Phytosterols (and) Tocopherol</b>	<b>Cargill</b>	<b>1.60</b>
	Lanette® 16	Cetyl Alcohol	BASF	1.20
	<b>D-Alpha-Tocopheryl Acetate</b>	<b>Tocopherol Acetate</b>	<b>Cargill</b>	<b>0.08</b>
	<b>StarDesign™ Power</b>	<b>Sodium Starch Octenylsuccinate (and) Hydroxypropyl Starch Phosphate</b>	<b>Cargill</b>	<b>2.88</b>
C	Euxyl® PE9010	Phenoxyethanol (and) Ethylhexylglycerin	Schülke	0.80
	Citric Acid (10% solution)	Citric Acid (and) Water	---	0.14
	Dissolvine GL-47-S	Tetrasodium Glutamate Diacetate	Nouryon	0.08
D	MIRAGE Bronze	Calcium Sodium Borosilicate (and) Tin Oxide (and) Iron Oxides	Eckart America	5.00
	MIRAGE Red	Calcium Sodium Borosilicate (and) Titanium Dioxide (and) Tin Oxide	Eckart America	5.00
	MIRAGE Silver	Calcium Sodium Borosilicate (and) Titanium Dioxide (and) Tin Oxide	Eckart America	10.00

Looking for fuss-free, easy application eye shadow with an extra kick? Glide-on Liquid Eye Shadow contains **Floraesters® 60** for longer-lasting color and satiny texture. Together with our **L22®** to help reduce the appearance of fine lines, and **Floraesters® 15** for enhanced pigment dispersion, Glide-on Liquid Eyeshadow brings you eye-to-eye with renewed vibrancy!

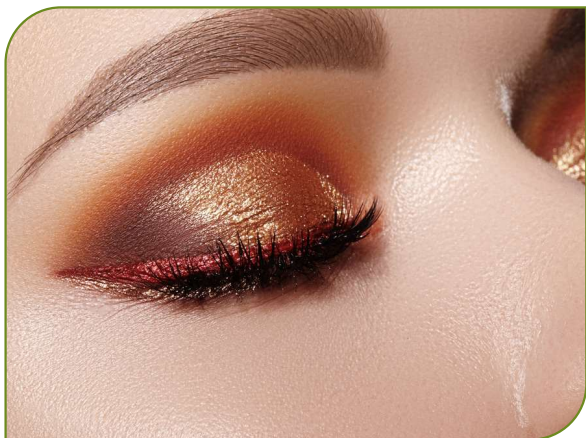
**PATENTS AND REGULATIONS** The information presented herein is intended to illustrate the possible technical applications of our products. However, since the use of this information and our products is beyond our control, any recommendations or suggestions are made without guarantee of warranty in each country and particularly in the absence of patent rights. In addition, we recommend that the user ensures that this product is in compliance with the local regulations in force, particularly in the country where the finished product is to be consumed. It is the responsibility of the user to comply with the patents and the regulations in force. Formula M039. Revision date: 12/2023

[www.cargillbeauty.com](http://www.cargillbeauty.com)



# GLIDE-ON LIQUID EYE SHADOW

with Floraesters® 60, L22®, StarDesign™ Power and Floraesters® 15



Looking for fuss-free, easy application eye shadow with an extra kick? Glide-on Liquid Eye Shadow contains **Floraesters® 60** for longer-lasting color and satiny texture. Together with our **L22®** to help reduce the appearance of fine lines, and **Floraesters® 15** for enhanced pigment dispersion, Glide-on Liquid Eyeshadow brings you eye-to-eye with renewed vibrancy!

## CHARACTERISTICS

- **pH:** 5.0-6.0
- **Viscosity:** 41-89 kcP, Brookfield Digital Viscometer Model RVDV-E at RT, T-C, Spindle S93, 2.0rpm.
- **Appearance:** thin lotion
- **Stability:** passed 2 weeks at 50C, 2 months stability at RT & 4 and 45°C, 3 cycles in F/T and H/C Process

## PROCESS

1. Mix the ingredients of Phase A in the main vessel with slow homogenization agitation at room temperature.
2. Begin heating to 70-75°C.
3. Slowly speed up the homogenization to activate Actigum CS11 once temperature reaches 70-75°C.
4. Mix ingredients of Phase B except StarDesign Power in a separate vessel at 70-75°C.
5. Add StarDesign Power once Phase B is melted and uniform.
6. Add Phase B to Phase A with homogenization agitation of 8500-9000rpm at 70-75°C.
7. Once uniform, shift the batch to propeller mixing with medium - rapid agitation. Begin cooling to 55-60°C.
8. Slow propeller speed to slow - medium agitation at 60°C.
9. Add Phase C with brief rapid propeller agitation at 40-45°C.
10. Stop mixing at 35-40°C.
11. When the emulsion becomes stable (recommended overnight), add Phase D with brief rapid propeller agitation at room temperature.



**PATENTS AND REGULATIONS** The information presented herein is intended to illustrate the possible technical applications of our products. However, since the use of this information and our products is beyond our control, any recommendations or suggestions are made without guarantee of warranty in each country and particularly in the absence of patent rights. In addition, we recommend that the user ensures that this product is in compliance with the local regulations in force, particularly in the country where the finished product is to be consumed. It is the responsibility of the user to comply with the patents and the regulations in force. Formula L064. Revision date: 11/2023

[www.cargillbeauty.com](http://www.cargillbeauty.com)

